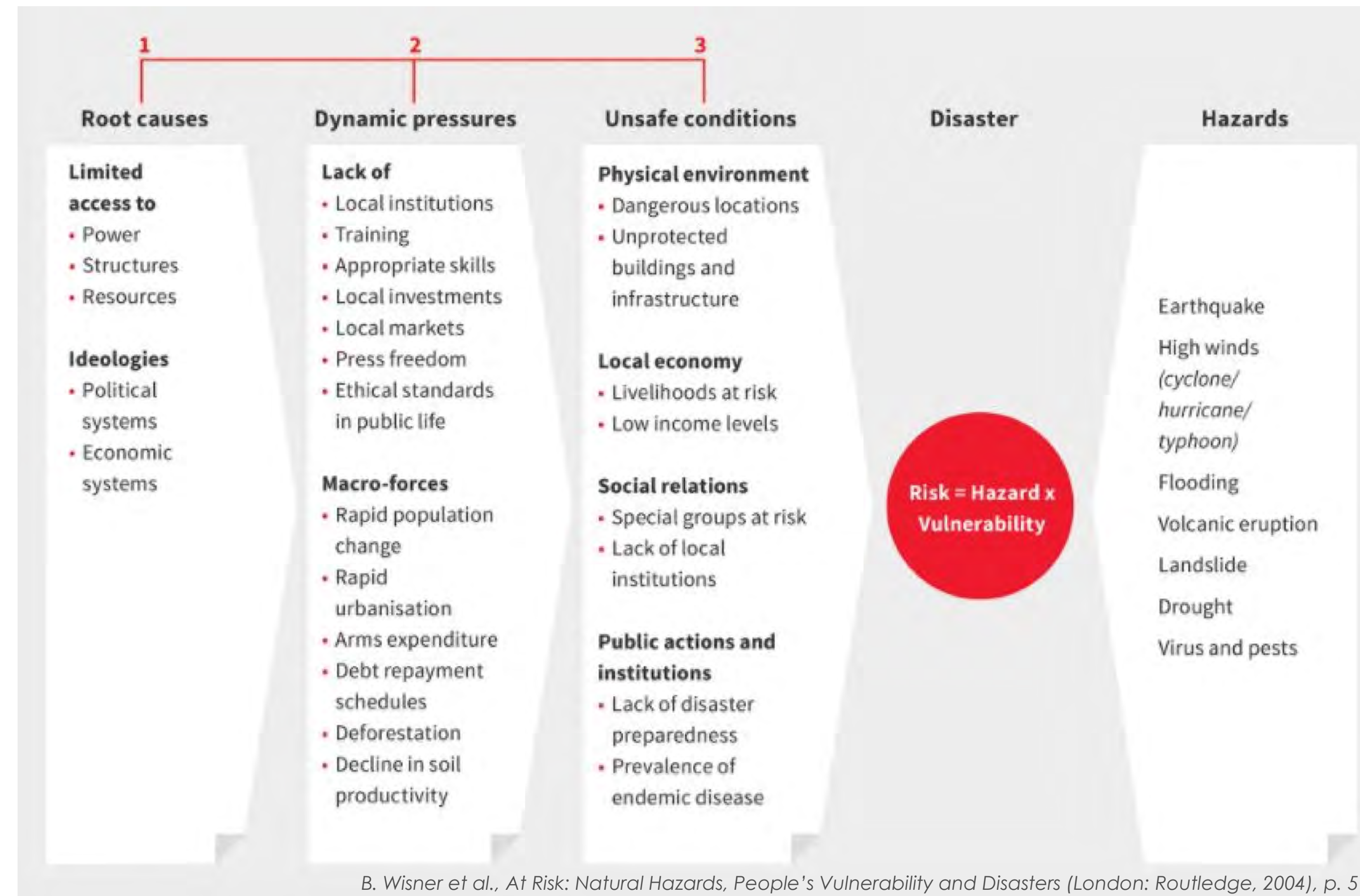


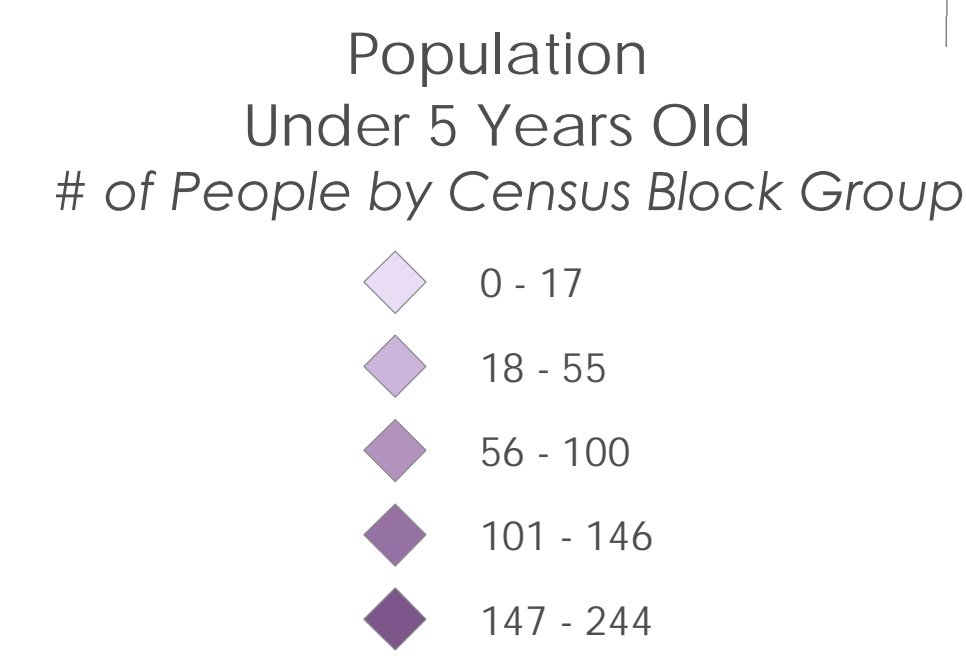
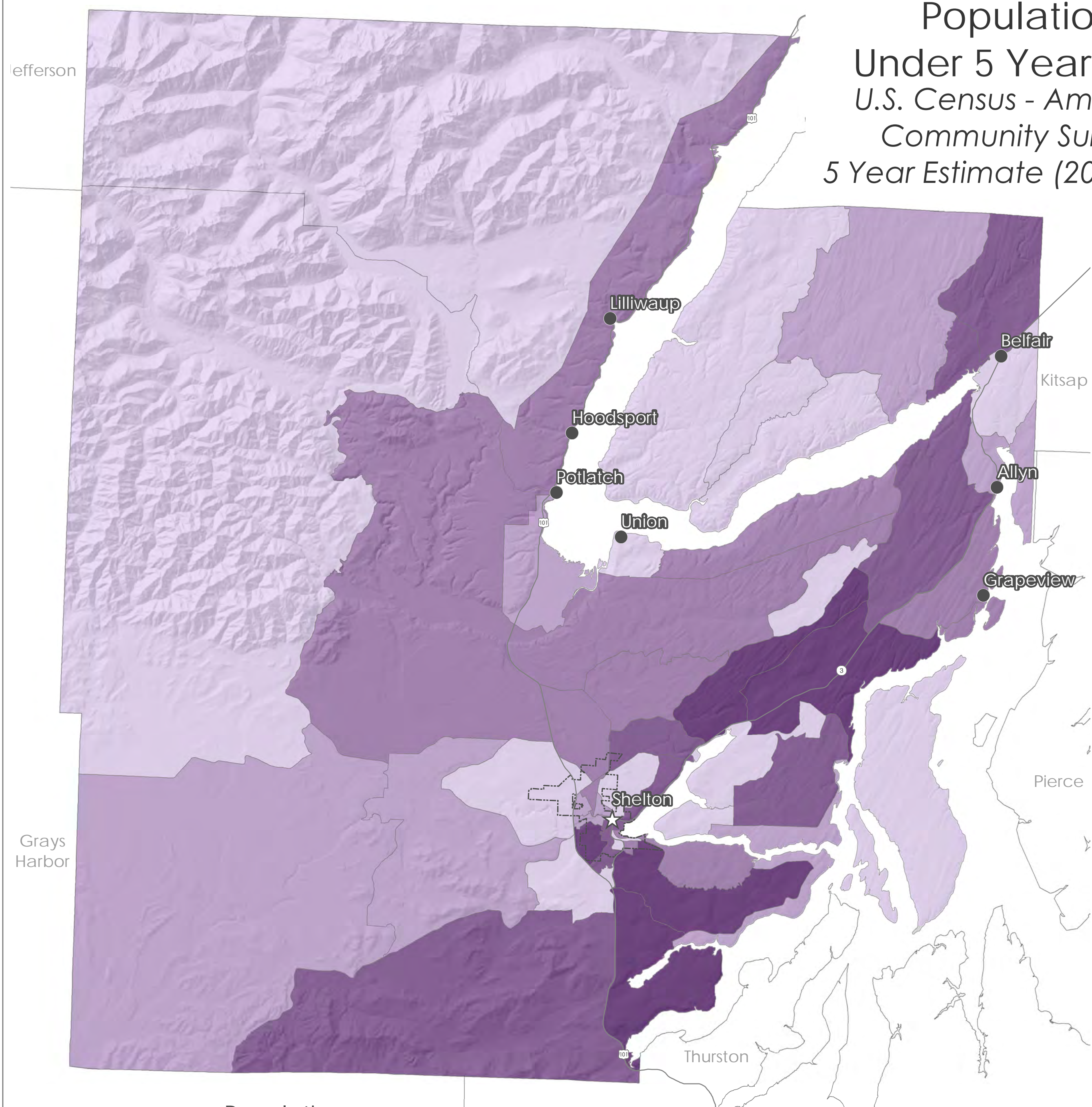
Mason County



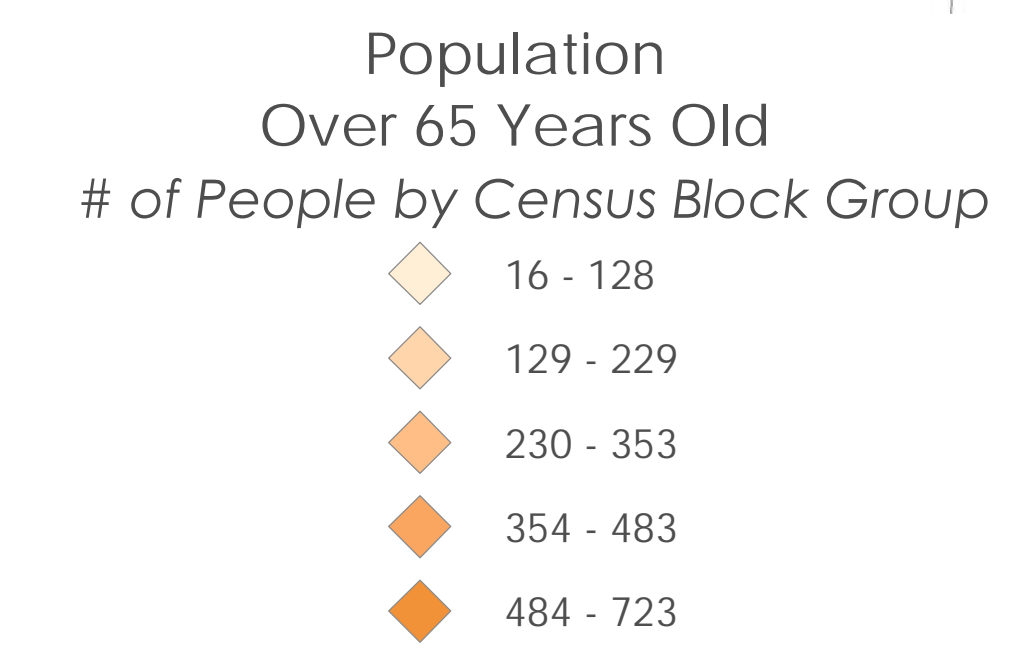
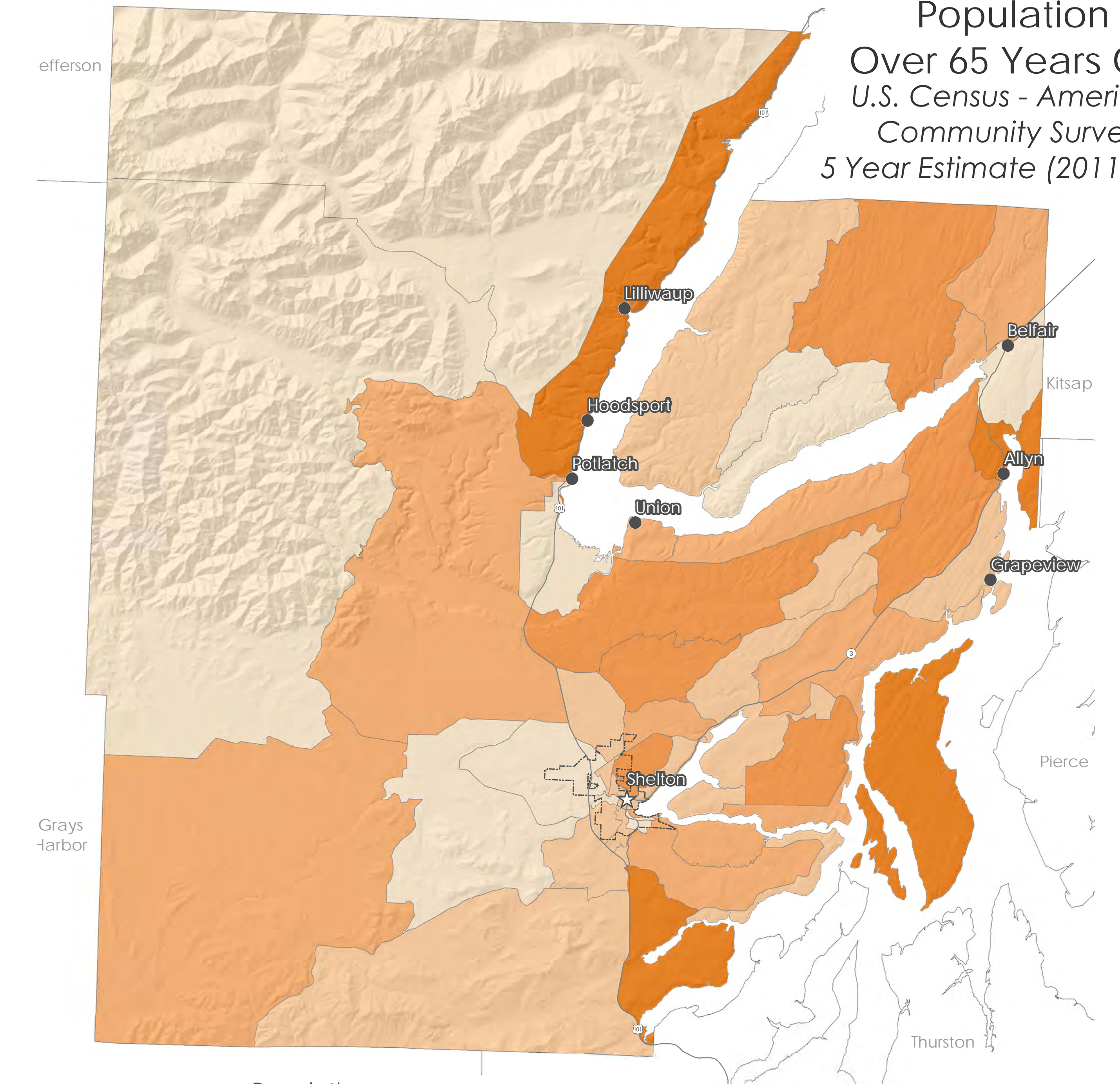
Social Vulnerability



Population Under 5 Years Old
U.S. Census - American Community Survey,
5 Year Estimate (2011-2015)



Population Over 65 Years Old
U.S. Census - American Community Survey,
5 Year Estimate (2011-2015)



When determining risk, it is significant to remember that risk is measured by not only the hazard, but also on how resilient a population is, or will be during the hazard. Resilience is influenced by many factors, including: age or income; available social networks, and neighborhood characteristics, all of which can be used to measure the social vulnerability of the area and its citizens. Based on a study completed by the University of North Carolina, factors that contribute to the level of vulnerability of a population are associated with four areas of impact, which, in part, are utilized within this assessment with a few modifications to the original study, as indicated:

Socioeconomic Status:

- o Below Poverty Level
- o Employment Status
- o Income level
- o No High School Diploma

Household Composition:

- o Age 65 or older
- o Age 5 or younger (the North Carolina study references age 17 or younger)
- o Disability (the North Carolina study referenced "Older than Age 5 with a Disability")
- o Single Parent Households

Socioeconomic Status:

- o Minority – race or ethnicity
- o Language barrier (Speaks English "Less than Well")

Housing/Transportation:

- o Multi-Unit Structures, including Group Quarters
- o Mobile Homes
- o Crowding
- o No Vehicle

The purpose of the classifications is to better understand whose needs are not being addressed through traditional service providers or who cannot safely access and use the standard resources offered for disaster preparedness, relief and recovery. Special focus on these groups during emergency situations is crucial because not only are they more likely to be effected by an event, but they are many times also less likely to recover.

VULNERABLE POPULATIONS

Population Group	Percent of Total Population*
Households Children 5 and Under	5%
Populations 65 and Older	20%
Populations 65 and Older Living Alone	12%
Population Below Poverty Level	17%
Population Below Poverty Level Under 18	36%
Language Other Than English	8.1%
At Least One Disability	21%
At Least One Disability 65 and over	41%
Households No Vehicles	4%
Households No Telephone	2%
Percent Housing Units Mobile Homes	18%

*Based on American Census Fact Sheets