

Sampling and Analysis Plan Available for Public Review and Comment



A PUGET SOUND INITIATIVE site

Reaching the goal of a healthy, sustainable Puget
Sound now and forever!

Sediments Characterization Study Begins

Ecology will begin a focused investigation to study contamination in sediments in Oakland Bay. Historical industrial and commercial use of the bay has led to sediment contamination and wood waste accumulation. Previous investigations have documented several contaminants above state cleanup standards. The Puget Sound Initiative is funding Ecology's efforts to investigate pollution and prioritize areas for cleanup.

The objectives of this study are to:

- Determine the nature and extent of sediment contamination and wood waste throughout Oakland Bay.
- Conduct a survey to determine the distribution of wood waste.
- Attempt to determine the potential source(s) of dioxin, total petroleum hydrocarbon (TPH) and polycyclic aromatic hydrocarbons (PAH) contamination.
- Test sediments and shellfish for chemical contaminants in order to evaluate potential risk to humans and the ecosystem.

Ecology Wants Your Input!

Ecology is asking for your comments on the Sediments Investigation Study. Oakland Bay is one of several embayments that will be studied for cleanup under the state's Puget Sound Initiative. You are invited to:

- **Review** the Sampling and Analysis Plan for the Oakland Bay Sediment Characterization study. See box to the right for document locations.
- **Send** your comments in writing to Ecology for consideration. **Comments will be accepted June 2- July 2, 2008.**
- **Attend** a public meeting and open house on **June 16, 2008**. More information about this event can be found on page 4.

Comments Accepted

June 2 - July 2, 2008

Submit Comments and Technical Questions to:

Cynthia Erickson
Site Manager
WA Department of Ecology
SWRO Toxics Cleanup Program
P.O. Box 47775
Olympia, WA 98504-7775
Phone: (360) 407- 6361
E-mail: Ceri461@ecy.wa.gov

Public Involvement Contact:

Meg Bommarito
Phone: (360) 407- 6255
E-mail: mbom461@ecy.wa.gov

Document Review Locations

William G. Reed /
Shelton Timberland Library
710 W Alder Street
Shelton, WA 98501
Phone: (360) 426-1362

WA Department of Ecology
Southwest Regional Office
300 Desmond Drive SE
Lacey, WA 98503

By appointment only:
Contact Debbie Nelson,
dene461@ecy.wa.gov or
(360) 407-6365

Ecology's Toxics Cleanup Website

[http://www.ecy.wa.gov/programs/
tcp/sites/oaklandBay/
oaklandBay_hp.htm](http://www.ecy.wa.gov/programs/tcp/sites/oaklandBay/oaklandBay_hp.htm)

Background

Historical and current industrial uses of Oakland Bay have resulted in sediment contamination in Shelton harbor and surrounding areas. Chemicals and waste water from timber and wood product manufacturing industries have been discharged into Oakland Bay. Petroleum product spills that occurred from 1980-2004 also contributed contaminants to the waterway. Marinas, bulk fuel facilities, aging septic systems and storm water have also played a role in contaminating sediments. Previous sediment investigations have confirmed the presence of several contaminants above state standards including; metals, semi-volatile organic compounds, petroleum products and wood waste contamination.

In addition to industrial sources, the bay has been impacted in various ways by non-point sources. Aging septic systems, old city sewage outfalls, herbicide runoff and storm water have led to a decline in the health of the bay.

The Toxics Cleanup Program is not the only Ecology program addressing the problems in Oakland Bay. The Water Quality Program is also working in the Bay and is currently developing a plan to address water quality problems, including fecal coliform bacteria and temperature. For more information about this work visit http://www.ecy.wa.gov/programs/wq/tmdl/oakland_bay/index.html.

Why This Cleanup Matters

Protecting and restoring Puget Sound

Decades of industrial, municipal, and naturally occurring pollution have damaged the quality, condition and ecology of Puget Sound. In May 2007, Governor Gregoire and the Washington State Legislature approved the Puget Sound Initiative to begin work restoring the health of the Sound by 2020.

One of the objectives of the Initiative is to protect and restore Puget Sound by cleaning up contaminated sites within one-half mile of the Sound. These

cleanup actions will help to reduce pollution and restore habitat and shorelines in Puget Sound.

Several areas in the south Sound have been identified as high priority cleanup areas for the Toxics Cleanup Program as part of this initiative. Early actions in these areas will contribute significantly to the restoration of Puget Sound. Ecology is planning investigations of baywide contamination in: Port Gamble, Dumas Bay, Padilla and Fidalgo Bay, Port Angeles, Budd Inlet, Port Gardner at Everett, and Budd Inlet.

What Happens Next?

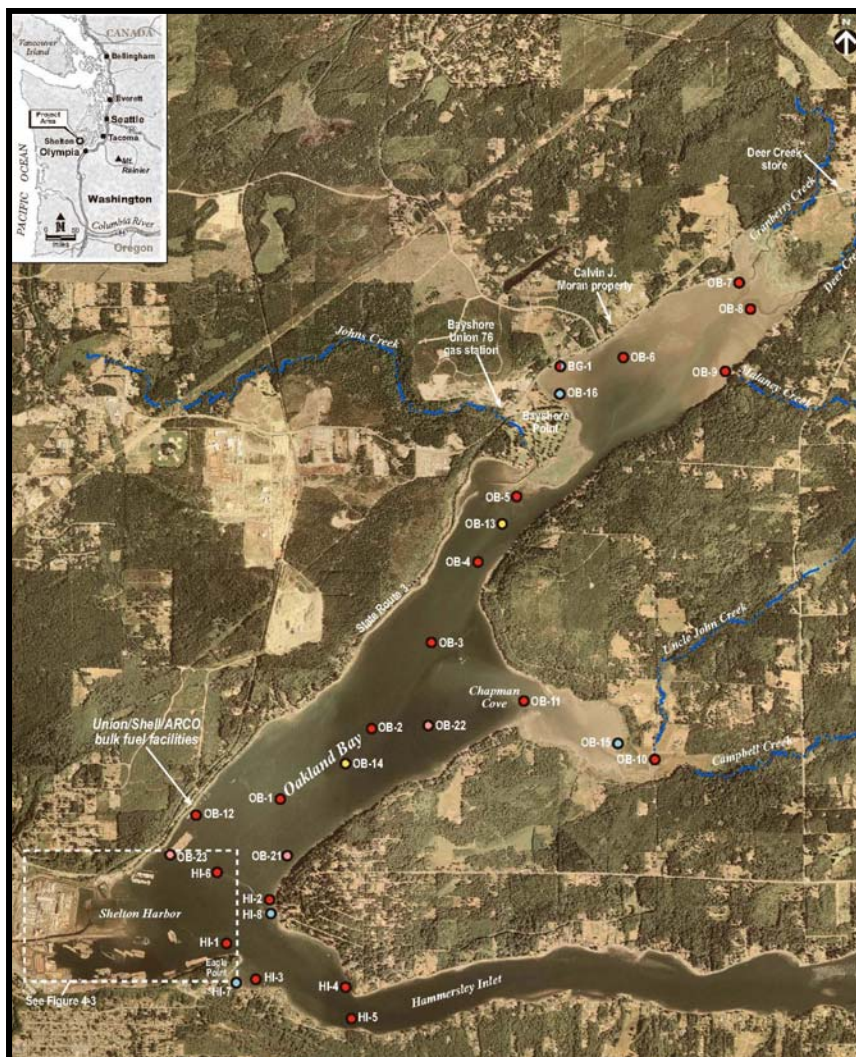
- Ecology will review and consider all comments received during the public comment period.
- Sediment and tissue sampling will begin in July 2008.
- A report detailing results of the sample analysis will be available in spring or summer 2009.
- Ecology will keep the community informed as the investigation moves forward. Additional public comment periods and public meetings will be held when appropriate.

NEED MORE INFORMATION?

1. **For health questions**, contact Elmer Diaz, Washington Department of Health, at (360) 236-3357 or email at Elmer.Diaz@DOH.WA.Gov.
2. **For questions about the sediments investigation**, contact Cynthia Erickson at (360) 407- 6361 or email at Ceri461@ecy.wa.gov.
3. **For more information about the health of Oakland Bay water**, contact Kim McKee at (360) 407-6407 or email at kmck461@ecy.wa.gov.

Oakland Bay Sediments Investigation

Oakland Bay Sediments Draft Sampling Location Maps

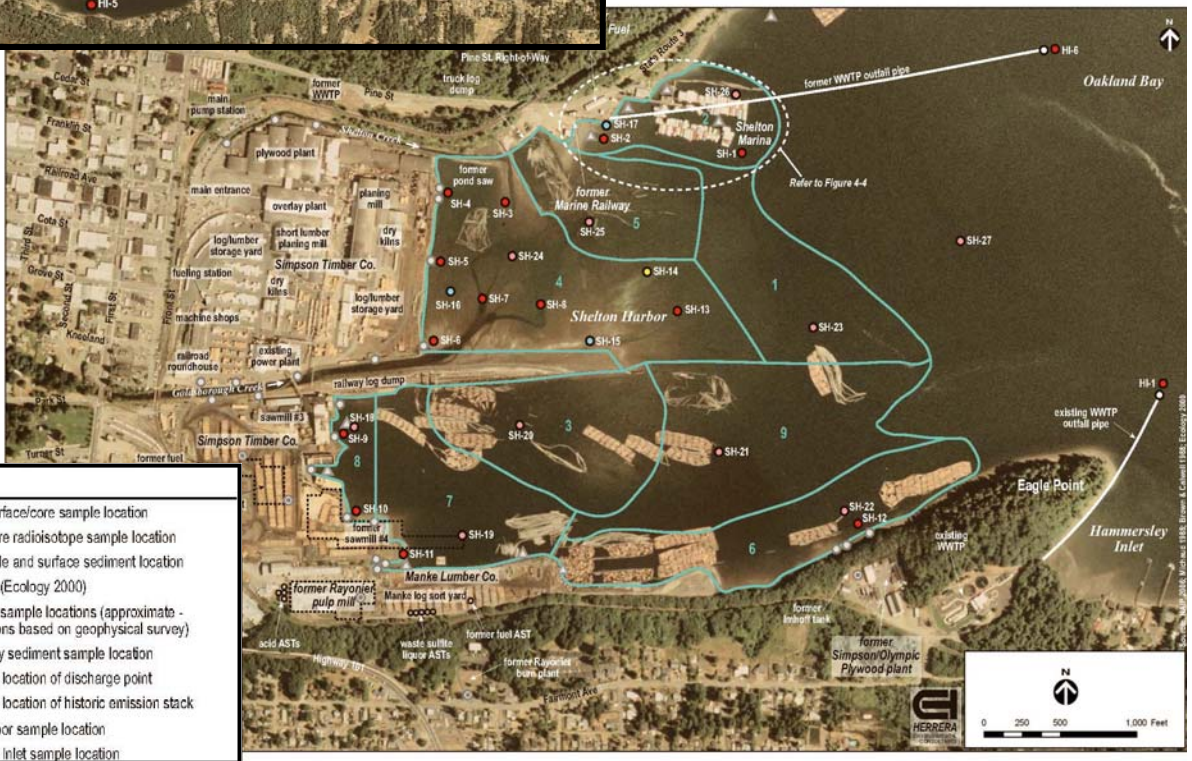


Legend

- Sediment surface/core sample location
- Sediment core radioisotope sample location
- Tissue sample and archived surface sediment location
- Wood waste sample location
- Background sample includes surface, core, and tissue sample

HI-1 Hammersley Inlet sample location
 OB-1 Oakland Bay sample location
 BG-1 Background sample location

Note: Four additional tissue sample locations in Oakland Bay and two additional tissue sample locations in Hammersley Inlet will be determined in the field.



Legend

- Sediment surface/core sample location
- Sediment core radioisotope sample location
- Tissue sample and surface sediment location
- Wood waste sample locations (approximate - actual locations based on geophysical survey)
- 2000 Ecology sediment sample location
- Approximate location of discharge point
- Approximate location of historic emission stack
- Shelton Harbor sample location
- Hammersley Inlet sample location



WASHINGTON STATE
DEPARTMENT OF
E C O L O G Y

PO Box 47600
Olympia, WA 98504-7600

Oakland Bay Harborwide Sediments Investigation Shelton, WA

Ecology Seeks Public Comment on Sampling and Analysis Plan

Public Comment Period:
June 2 - July 2, 2008

If you need this publication in an alternative format, call (360) 407-6300. Persons with hearing loss, call 711 for Washington Relay Service. Persons with speech disability call 877-833-6341.

Public Meeting and Open House Thursday, June 16, 2008

June 16 from 6:30 - 8:30 p.m.
at the Shelton Civic Center
525 W. Cota, Shelton
Phone: (360) 426-9731

Join us to hear more about the progress on the Budd Inlet Sediments Investigation

6:30 - 7:00 p.m.	Open House
7:00 - 8:00 p.m.	Presentation
	Question and Answer Session
8:00 - 8:30 p.m.	Open House

Ecology staff will be available to answer your questions.