



**MASON COUNTY  
DEPARTMENT OF COMMUNITY DEVELOPMENT**

Mason County Bldg. III, 426 West Cedar Street  
PO Box 279, Shelton, WA 98584

[www.co.mason.wa.us](http://www.co.mason.wa.us)

(360) 427-9670

Belfair (360)275-4467

Elma (360)482-5269

## STANDARD 4'0" EXTERIOR OR INTERIOR BRACED WALL PANEL (BWP or IBWP) IRC R602.10.3

### Exterior (BWP)

Method 3 of IRC (for other approved methods see R602.10.3)

Minimum 4'0" panel width

Maximum 8'0" height

(See Table R602.10.5 below for additional allowances)

5/16" APA rated sheathing 16" o.c. framing;  
or 3/8" APA rated sheathing 24" o.c. framing.

Secure with 6d common nails

6" o.c. at edges, 12" o.c. in the field, & 6" o.c.  
at gable end walls.

Align vertical joints over studs.

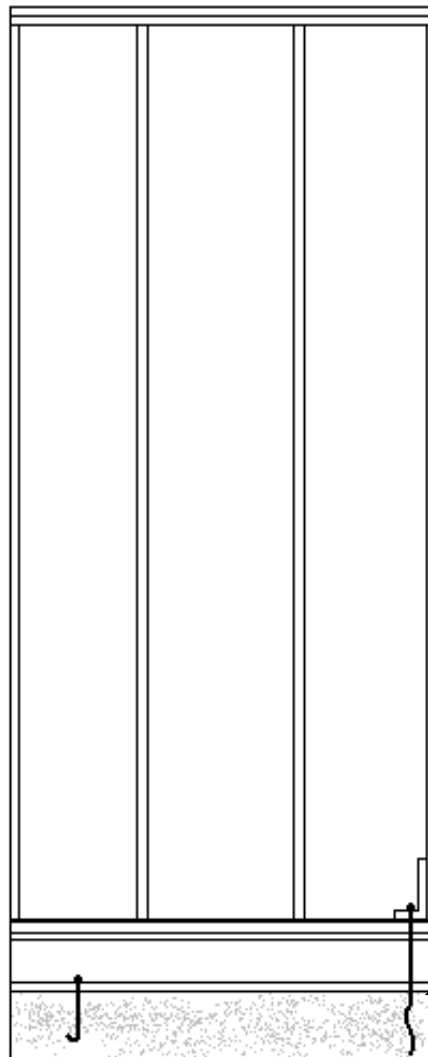
1 1/2" blocking at horizontal joints.

Extend sheathing to foundation sill plate.

Exterior braced wall lines shall have a braced wall panel located at each end of the wall line. Exception: When a BWP begins no more than 8'0" from the end one of the following is allowed:

A min. 24" wide panel is applied to each side of the bldg. corner and the (2) 24" wide panels at the corner shall be attached in accordance with figure R602.10.5, or

The end of each braced wall panel closest to the corner shall have an 1800# capacity tie down device fastened to the stud at the edge of the braced wall panel closest to the corner and to the foundation or framing below. The tie down device shall be installed in accordance with manufacturer specifications.



### Interior (IBWP)

Typical Method 5 R602.10.3

Minimum 4'0" panel width when 1/2" gypsum board installed on 2 sides of the braced wall panel.

Minimum 8'0" panel width when 1/2" gypsum board is placed on one face of the braced wall panel.

Secure with 6d drywall nails 7" o.c.

Align vertical joints over studs

1 1/2" blocking at horizontal joints.

Support IBWP as specified in IRC R602.10.9

Interior braced wall lines shall be fastened to floor and roof framing in accordance to Table R602.3.1(1) and to required foundations in accordance with Section R602.11.1 (see foundation details). In addition floor joists parallel to the top plate shall be toe-nailed to the top plate with at least 8d nails spaced a maximum of 6" o.c.

Top plate laps shall be face-nailed with at least (8) 16d nails on each side of the splice.

1800# uplift capacity tie down device. See exception #2, exterior BWP